

THEATRE  
ROYAL 2024

WELCOME

# RESPECT

**We acknowledge the traditional and original owners of the land on which we work and meet, the Muwinina people of Nipaluna/Hobart, who did not survive colonisation and the subsequent war on this land. We pay our respects to all Palawa/Pakana people of Lutruwita/Tasmania, who continue to care for this Country and share culture and knowledge so generously.**

Prior to every performance in our venues, you will hear an Acknowledgement of Country from Uncle Jim Everett, a pioneering and unique voice, proudly representing the stories of the Tasmanian Aboriginal community. Learn more about this initiative on our website.



There's a lot of joy coming our way in 2024.

The year kicks off with wild and brilliant dance and a burlesque bear-hug, and ends with a breathtaking balancing act. In between is a myriad of stories and experiences, new and old, comforting and challenging.

From the spectacularly new and unconventional *Anito*, to the longest-running play in the world, *The Mousetrap*, we're playing in all corners of creative exploration and experience.

We've also spread our programming wings further into new spaces, leaning into our partnership with the University of Tasmania and across our performing arts centre, The Hedberg.

The Hedberg Sounds is a new series of local and national music collaborations that will be presented in our city's most beautiful and acoustically exquisite venue, the Ian Potter Recital Hall. A more serious-sounding sister series, The Hedberg Talks, locates conversations that connect our artistic program with academic research and contemporary culture.

Our Staycation school holiday program returns in 2024 with four great Australian companies making the best work for children, young people and families, paired with a range of creative workshops to inspire kids.

RAWspace, our development program for Tasmanian artists, also gets a new twist in 2024. In partnership with Mona Foma, music and sound artists will have the opportunity to develop new work and test it on audiences during the festival.

We count ourselves very lucky to be at the centre of that magical relationship between artists and audiences. In 2024, we'll continue working with a broad range of partners and doing everything we can to ensure more people in our community have an opportunity to experience creativity in new and interesting ways.

When you look through the program, you'll notice that we're layering a range of experiences in all forms of performance to make sure that you get to choose from the best of what's on offer locally and nationally.

And we're encouraging you to take a risk and try something new – regardless of whether you prefer the experimental or traditional end of the spectrum.

I hope you'll join us.

Simon

## February

<b>ANITO</b> Justin Shoulder 15 – 17 Feb	<b>8</b>
--	----------

<b>Wayfinder</b> Dancenorth 22 – 24 Feb	<b>10</b>
---	-----------

## March

<b>Lost in Shanghai</b> Jane Hutcheon 15 – 16 Mar	<b>12</b>
---	-----------

<b>Dirty Laundry</b> Briefs Factory International 20 – 23 Mar	<b>14</b>
---	-----------

<b>Songs of the Sea</b> Van Diemen's Band 23 Mar	<b>39</b>
--	-----------

## April

<b>Xyris Quartet</b> 6 Apr	<b>40</b>
-------------------------------	-----------

<b>To Carry / To Hold</b> Mature Artists Dance Experience 11 – 12 Apr	<b>16</b>
---	-----------

<b>I Wish....</b> Patch Theatre and Gravity & Other Myths 23 – 24 Apr	<b>21</b>
---	-----------

## May

<b>The Trojan War</b> A Slightly Isolated Dog 10 – 11 May	<b>18</b>
---	-----------

## June

<b>The Mousetrap</b> John Frost for Crossroads Live and Shake & Stir Theatre Co 11 – 22 Jun	<b>24</b>
--	-----------

## July

<b>ARC</b> Erth Visual & Physical Inc 10 – 12 Jul	<b>22</b>
---	-----------

## August

<b>The Visitors</b> Moogahlin Performing Arts and Sydney Theatre Company 1 – 3 Aug	<b>26</b>
---	-----------

<b>Past the Shallows</b> ATYP and Archipelago Productions 22 – 23 Aug	<b>28</b>
---	-----------

<b>La Bohème</b> Opera Australia 30 – 31 Aug	<b>30</b>
--	-----------

## September

<b>Grug</b> Windmill Theatre Company 5 – 6 Sep	<b>32</b>
--	-----------

<b>Body Body Commodity</b> Tasdance and Jenni Large 13 – 14 Sep	<b>34</b>
---	-----------

<b>The Equinox Sound Baths</b> Bing / Santospirito 21 Sep	<b>41</b>
---	-----------

## October

<b>The Riddle of Washpool Gully</b> Terrapin Puppet Theatre and Dead Puppet Society 3 – 5 Oct	<b>23</b>
---	-----------

<b>Cloak and Dagger</b> Van Diemen's Band 26 Oct	<b>42</b>
--	-----------

## November

<b>Aurora</b> Australian String Quartet Fri 22 Nov	<b>43</b>
--	-----------

<b>A Simple Space</b> Gravity & Other Myths 19 – 23 Nov	<b>36</b>
---	-----------

Please be aware that some productions in the 2024 Season have specific patron advice and warnings. Check our website for a full description of these on each show page, and contact our Box Office if you have any questions or concerns.

World Premiere

Mona Foma presents

# ANITO

Justin Shoulder

*ANITO* transports audiences to a simultaneously ancient and futuristic place out of time. Fig trees heaving with ripe fruit harbour mythical creatures both beautiful and terrifying. Seasons change and fertile new life bubbles into existence.

In this world premiere performance, Justin Shoulder and their collective of artists with deep roots in underground, queer and diasporic club scenes conjure lush ecosystems sculpted by the opposing forces of terror and beauty.

Merging installation, visual arts, theatre and dance, *ANITO*'s world blurs boundaries between human, machine, animal and plant to question the definition of life itself.

Made in collaboration with Matthew Stegh, Corin Iletto, Fausto Brusamolino, Victoria Hunt & Eugene Choi.

*...an undeniable joy and  
promise of alternative futures*

Australian Arts Review

(on Justin Shoulder's work,  
*AEON†: TITAN ARUM*)

Studio Theatre

Thu 15 Feb 7.30pm (Preview)

Fri 16 Feb 7.30pm

Sat 17 Feb 2pm & 10pm

🕒 60 mins (no interval)

⚠️ Patron advice

Nudity, bright and moving  
lights and loud sounds.

💰 Tickets \$30 - \$50

Image: Liz Ham

Anito Partner



Produced by

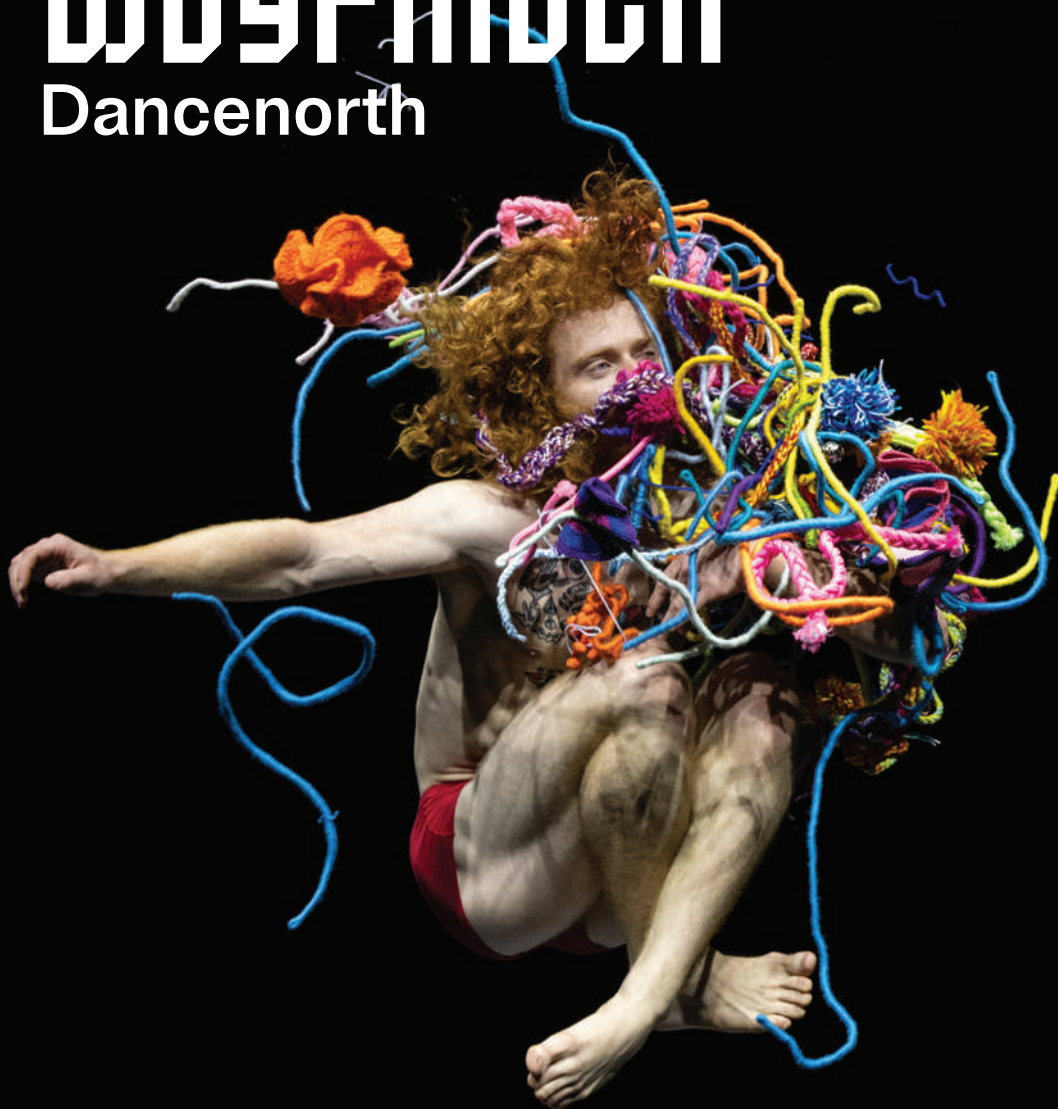


INSITE ARTS

Mona Foma and the Theatre Royal present

# WAYFINDER

## Dancenorth



*Wayfinder* confronts today's collective anxiety with unbridled energy and optimism.

In keeping with Dancenorth's spirit of collaboration, *Wayfinder* is soundtracked by Melbourne's Grammy-nominated jazz-funk auteurs Hiatus Kaiyote and sound artist Byron J. Scullin.

A custom inflatable stage, 70km of wool and over 100 luminous "pearls" are part of a visual collaboration with the Japanese-born artist Hiromi Tango. With light, colour, sound and texture, *Wayfinder* rapturously bounds into a hopeful future.

*Thrillingly inspired*

Guardian Australia

Theatre Royal

Thu 22 - Sat 24 Feb 7.30pm

🕒 55 mins (no interval)

⚠️ **Patron advice**  
Contains strobe lighting, theatrical haze, loud/ startling noise and interactive objects that omit light and sound.

💰 **Tickets \$30 - \$79**

Image: Amber Haines

Dancenorth Partners



Contemporary Asian Australian Performance

# LOST IN SHANGHAI

Written by  
Jane Hutcheon

With revolutionary war looming over fading colonial opulence, a young girl watches from the prow of a Hong Kong-bound ship as her home and family fade in the distance. In *Lost in Shanghai*, the acclaimed journalist Jane Hutcheon (*One Plus One*, ABC) steps back through time to meet that little girl – her own mother, Bea.

In 2018, with Bea aged 99, Hutcheon returned to her mother's childhood in pre-Communist Shanghai, where an extraordinary Eurasian family both put down roots and lost their way. Backed by moving photography from the family archive, Hutcheon takes the stage to narrate her own family's story of tragedy, survival and a schism that sent ripples across generations.

Co-Directed by William Yang and Tasnim Hossain.

*A tantalising insight into the breadth and bravery she displayed across her career.*

The Age/Sydney Morning Herald

Studio Theatre

Fri 15 Mar 7.30pm  
Sat 16 Mar 2pm & 7.30pm

🕒 75 mins (no interval)

🗣️ **Patron advice**  
Aboriginal and Torres Strait Islander people are advised that this performance contains images and voices of people who have died.

🎫 Tickets \$30 - \$60

Image: Jane Hutcheon

CAAP Partners





Briefs Factory International

# DIRTY LAUNDRY

Get ready to air your dirty laundry as Meanjin/Brisbane's cult cabaret company Briefs Factory International, set the night on a riotous spin cycle. *Dirty Laundry* is a personal and political drag party of physical comedy and circus spectacle.

In *Dirty Laundry*, Fez Faanana (aka Shivanana) and their Briefs Boys lather up the audience with soap sud seduction to shed light on society's odd socks. Inside the Boys' inclusive laundromat setting, Australian nationhood gets pegged to the Hills Hoist with slapstick gymnastics, subversive stain-removal and tumble-dry humour.

★★★★★

*The Briefs Boys know how to combine the serious, the ironic, and the naked.*

ArtsHub

Theatre Royal

Wed 20 - Thu 21 Mar 7.30pm

Fri 22 - Sat 23 Mar 8.30pm

Opening Night Event

Wed 20 Mar

🕒 90 mins (with interval)

🎫 Patron advice

Strictly 18+

Haze, nudity and explicit language.

💰 Tickets \$30 - \$79

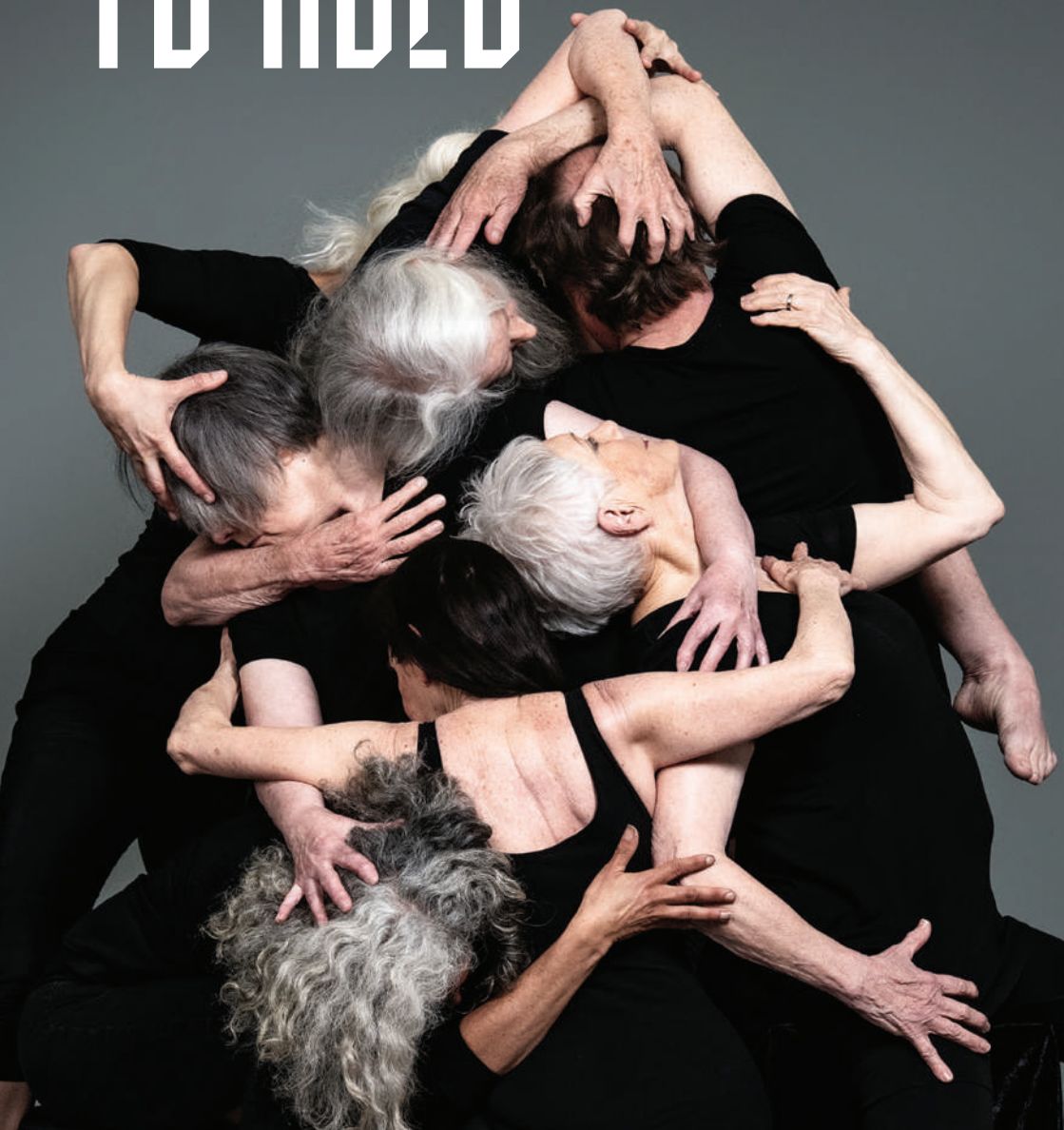
Image: Joel Devereux

Briefs Factory International Partner

 ClusterArts

Mature Artists Dance Experience, in association  
with the Theatre Royal, presents

# TO CARRY / TO HOLD



*To Carry / To Hold* celebrates the power of  
the human body and the stories it holds.

This new commission by choreographer Liesel  
Zink has been especially created for Mature  
Artists Dance Experience (MADE) – the  
groundbreaking company that embraces the  
experience, skill and strength that older dancers  
have developed over their careers.

*To Carry / To Hold* intertwines past, present  
and future in an exploration of the stories that  
connect us across time, space and generations.

*MADE is a celebration  
of movement, artform  
and wisdom.*

Forty South

Studio Theatre

Thu 11 - Fri 12 Apr 7pm

🕒 50 mins (no interval)

🎫 Tickets \$30 - \$50

A Slightly Isolated Dog

# THE TROJAN WAR



Five flirtatious “French” performers meet you at the door. They bring you in, they show you to your seat, they flirt with you. Maybe they fall a little bit in love with you. Then they tell a story – with you.

Like a wild dress-up party, *The Trojan War* tells the story of the tragic fall of Troy through theatrical magic, twisted pop songs and explosive wit. The most charming performers you can hope to meet play a revolving repertoire of outrageous characters.

Created and performed by A Slightly Isolated Dog, this New Zealand theatre company delivers a frantic and hilarious mash-up in the style of *Monty Python* meets *The Mighty Boosh*. Leave your inhibitions at the door and join us to explore hilarious parallels between war-torn ancient Greece and the chaos, confusion and absurdity of the present day.

*These gifted performers  
and improvisers have  
created something explosive  
and remarkable here.*

Regional News,  
Eyes on Wellington

Studio Theatre

Fri 10 May 7.30pm  
Sat 11 May 2pm & 7.30pm

🕒 75 mins (with interval)

💰 Tickets \$30 - \$45

Image: Andi Crown

A Slightly Isolated Dog Partners

ARTS COUNCIL  
NEW ZEALAND TOI AOTEAROA  
creative nz

NCM

# STAYCATION

Five renowned Australian companies bring rare and exotic animals, mysterious mythological creatures and death-defying acrobatics to spice up school holidays in 2024.

Alongside performance seasons, we will again be presenting workshops at the Theatre Royal and at Moonah Arts Centre giving young people more opportunities to create.

## April

Patch Theatre in collaboration with  
Gravity & Other Myths

### *I Wish...*

## July

Erth Visual & Physical Inc

### *ARC*

## October

Terrapin Puppet Theatre and  
Dead Puppet Society

### *The Riddle of Washpool Gully*

TR Staycation Partners



Patch Theatre in collaboration with Gravity & Other Myths

## I Wish...



*Brilliantly executed,  
creative and funny*  
Kiddo Mag

Enter a world of colour and creativity with leaders in children's performance Patch Theatre and the boundary-pushing circus company Gravity & Other Myths, as performers imagine all the things they could be – from an astronaut to a unicorn, and everything in between.

Featuring gravity-defying acrobatics, stunning visuals, and playful humour, *I Wish...* is an unforgettable live performance experience.

Image: Andrew Beveridge

Patch Theatre and  
Gravity & Other Myths Partner



Government  
of South Australia

## Studio Theatre

Tue 23 Apr 5.30pm  
Wed 24 Apr 2pm & 5.30pm

🕒 50 mins (no interval)

🗣️ **Patron advice**  
Recommended for  
children 4+  
Haze and lighting effects.

🎫 **Tickets \$25 - \$35**

Erth Visual & Physical Inc

# ARC

Step into a diverse ecosystem in which the renowned puppetry company Erth brings to life 14 extraordinary species from across the animal kingdom. Using intricately constructed puppets, Erth gives young environmentalists the chance to interact with rare and exotic animals including the armoured pangolin and endangered Leadbeater's possum.

ARC follows the sold-out 2022 Theatre Royal season of *Erth's Prehistoric World*. ARC is Erth's hopeful new vessel enabling young people to appreciate nature's fragility and start them on a path towards ensuring its thriving future.

*If you get the opportunity to experience any of Erth's work – go!*  
Theatre Travels

Studio Theatre

Wed 10 Jul 6pm  
Thu 11 Jul 11am & 6pm  
Fri 12 Jul 11am

🕒 55 mins (no interval)

⚠️ **Patron advice**  
Recommended for children 5+  
Smoke effects and loud noise.

💰 **Tickets** \$25 - \$35



Terrapin Puppet Theatre and Dead Puppet Society

# The Riddle of Washpool Gully



*Vividly imagined and meticulously realised with beauty, wit and immense heart*  
The Mercury

On the edges of cities, down dusty roads and through dense thickets of scrub is the lonely creek bed of Washpool Gully. Rumbling of engines has woken something from its long slumber and the creek bed is coming to life.

Combining richly imaginative puppets and miniature sets by Terrapin (*Scaredy Cat*, *The Paper Escaper*) and Dead Puppet Society (*The Wider Earth*) this work gives a voice to the mythological creatures of this country's expansive landscape.

Studio Theatre

Thu 3 Oct 2pm  
Fri 4 Oct 2pm & 5.30pm  
Sat 5 Oct 11am, 2pm & 5.30pm

🕒 50 mins (no interval)

⚠️ **Patron advice**  
Suitable for children 6+  
Relaxed Performance:  
Please see our website  
for further information.

💰 **Tickets** \$25 - \$35



The Theatre Royal, in association with John Frost for Crossroads Live and Shake & Stir Theatre Co, presents

# Agatha Christie's THE MOUSETRAP

THE genre-defining murder mystery from the best-selling novelist of all time... case closed!

As news spreads of a murder in London, a group of seven strangers find themselves snowed in at a remote countryside guesthouse. When a police sergeant arrives, the guests discover - to their horror - that a killer is in their midst! One by one, the suspicious characters reveal their sordid pasts. Which one is the murderer? Who will be their next victim? Can you solve this world-famous mystery for yourself?

For over 70 years, Agatha Christie's *The Mousetrap* has kept millions of people from every corner of the globe on the edge of their seats. Directed by Robyn Nevin, this new Australian production, in its only Tasmanian season, is the major theatre event of the year.

*The cleverest murder  
mystery of the theatre.  
I think The Mousetrap  
could run forever*

Daily Telegraph

Theatre Royal

Tue 11 - Fri 14 Jun 7pm  
Sat 15 Jun 2pm & 7pm  
Thu 20 - Fri 21 Jun 7pm  
Sat 22 Jun 2pm & 7pm

Special event Thu 13 Jun

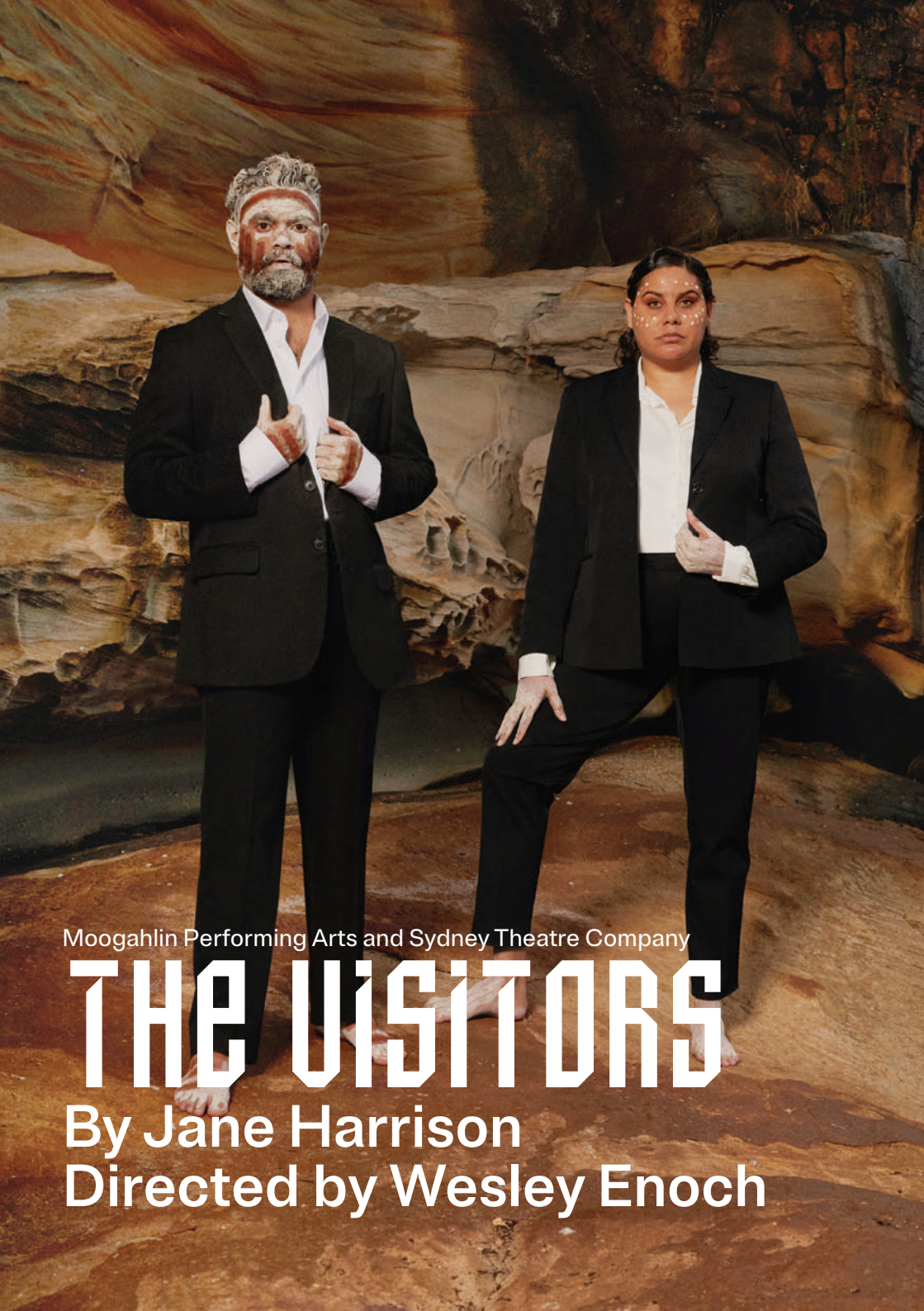
🕒 140 mins (with interval)

💰 Tickets \$30 - \$125

Image: Brian Geach from  
the original Australian Production

TR Production Partner





Moogahlin Performing Arts and Sydney Theatre Company

# THE VISITORS

By Jane Harrison

Directed by Wesley Enoch

On a sweltering day in January 1788, seven clan leaders gather on a sandstone escarpment overlooking the harbour. Beyond the friendly banter, protocols and hospitality, a momentous decision is waiting to be made.

A mysterious fleet of giant nawi is amassing in the harbour and as they creep closer, these seven representatives must choose unanimously: whether to send these strangers on their way or welcome them?

After its Sydney Theatre Award-winning premiere production at the 2020 Sydney Festival, Muruwari playwright Jane Harrison's *The Visitors* is a brand-new production directed by Quandamooka man Wesley Enoch.

★★★★★

*The Visitors is a powerful and contemplative performance that challenges the mind and moves the heart.*

Time Out

Theatre Royal

Thu 1 – Sat 3 Aug 7.30pm

Opening Night Event  
Thu 1 Aug

🕒 75 mins (no interval)

🗣️ **Patron advice**  
Infrequent course language, themes of racial violence and intergenerational trauma.

🎫 Tickets \$30 - \$89

Image: Rob Hookey

Moogahlin Performing Arts  
and STC Partners



Australian Theatre for Young People  
and Archipelago Productions

# PAST THE SHALLOWS

By Julian Larnach



Harry and Miles' dad, an abalone diver, disappears with his grief into the deep waters of Tasmania's wild south coast. The 15-year-old Miles is left to care for Harry, who's just 10 years old. Soon, the bonds anchoring the family become frayed.

Adapted by playwright Julian Larnach from Favel Parrett's award-winning debut novel and directed by Ben Winspear, *Past the Shallows* sees the roiling sea beyond the shoreline becoming a metaphor for the turmoil that accompanies incalculable loss. Together the family rides rogue waves of violent masculinity; and the tender swells of brotherhood that might just carry them home.

*Raw and honest*

Time Out

Studio Theatre

Thu 22 - Fri 23 Aug 7.30pm

🕒 75 mins (no interval)

👤 **Patron advice**  
Recommended for ages 14+  
Themes of alcoholism and family violence.

💰 **Tickets \$30 - \$50**



Opera Australia

# La Bohème

Young hearts burn bright in the love story that inspired *Moulin Rouge*. When Mimi and Rodolfo's hands first meet in a small apartment on a freezing Parisian night, the pair fall for each other immediately. A candle is extinguished and love blooms under the cover of darkness.

As the pair navigate Paris's nightlife, artists, musicians and lovelorn benefactors, their futures become inseparably entwined.

The youthful universality of Puccini's *La Bohème* has maintained its relevance essentially uninterrupted since its Turin premiere in 1896. Opera Australia's new staging of *La Bohème* reimagines one of the world's favourite operas with fresh vitality, fully embracing the romantic intensity and bittersweet, fleeting feeling of youthful invincibility.

Theatre Royal

Fri 30 – Sat 31 Aug 7.30pm

🕒 140 mins (with interval)

💰 Tickets \$30 - \$99

Windmill Theatre Company

# GRUG

Based on the picture book  
created by Ted Prior



Grug is an adventurous little chap – the top of a Burrawang tree who didn't let a fall hold him back. Resembling a small, striped haystack, he has to navigate the world his own way, finding creative solutions to cabbage-eating snails and tricky dance moves. He makes plenty of new friends too, from a carpet snake to an echidna.

Based on Ted Prior's beloved book series, *Grug* is perfect for first time theatregoers and theatre-loving families. Windmill Theatre Company's charming, award-winning puppetry has seen the little tree-top-who-can perform to more than 50,000 children and families around the world.

*Who would have thought so  
much fun would come from  
the top of a burrawong tree?*

The Sunday Mail

Studio Theatre

Thu 5 – Fri 6 Sep 5.30pm

🕒 35 mins

👤 Patron advice  
Recommended for  
children 2+

🎫 Tickets \$25 - \$35

Image: Shane Reid /  
Carnival Studio

TR Production Partner



Windmill Theatre Company Partner



Government of  
South Australia

Tasdance and Jenni Large

# BODY BODY COMMODITY



*Body Body Commodity* is a visceral, visual, defiant and explicit demonstration of feminine fury and power.

In Jenni Large and Tasdance's presentation of *Body Body Commodity*, five celebrated female dancers manipulate and interpret a mass of pastel foam objects, blurring the lines between object, body, power and product. The performers balance on the sharp, serrated line between humorous and harrowing, inviting the audience to connect with the confronting demands society and commerce place on women's bodies.

*...a contemporary  
dance work of  
transformative grace,  
skilled grotesqueries  
and unfiltered physical  
female power.*

Arts Hub

Studio Theatre

Fri 13 - Sat 14 Sep 7.30pm

🕒 60 mins (no interval)

🗨️ Patron advice  
Contains coarse language  
and sexual themes.

💰 Tickets \$30 - \$50



Gravity & Other Myths

# A SIMPLE SPACE

Sweat flies to the beat of driving live percussion as seven highly-skilled acrobats leap, roll, trip and swing around the stage. With their daring gymnastics, *A Simple Space's* performers elicit uncontrolled responses from the audience, some of whom get closer to the action than they bargained for.

Without overwrought lighting, makeup, costumes and plot, the performers of *A Simple Space* have nothing to rely on beyond their skill, energy and finely-honed talent.

Delivered with irresistible humour, *A Simple Space* lets viewers hear every breath, feel the heat of the moment and be immersed in each gravity-defying feat.

*A genuinely jaw-dropping display of synchronicity and strength.*

Time Out, London

Studio Theatre

Tue 19 - Sat 23 Nov 7.30pm

🕒 60 mins (no interval)

🎫 Tickets \$30 - \$65

Image: Chris Herzfeld

GOM Partners



# The Hedberg Sounds

The Hedberg Sounds is a program of exceptional local and national musicians that showcase The Hedberg as a home for intimate and unique music experiences.

This inaugural program is presented by the Theatre Royal and the University of Tasmania.

23 March	Van Diemen's Band <b>Songs of the Sea</b>
6 April	Xyris Quartet
21 September	Bing/Santospirito <b>The Equinox Sound Baths</b>
26 October	Van Diemen's Band <b>Cloak &amp; Dagger</b>
22 November	Australian String Quartet <b>Aurora</b>

Van Diemen's Band

## Songs of the Sea

Oceans are vast, deep and mysterious. They sustain us, swallow us whole and transport cultures over vast distances. Floating on the ocean's turbulent swell are grand, lyrical narratives, stories, myth and song.

Steering the audience through *Songs of the Sea* is Mikelangelo (Mikelangelo and The Black Sea Gentlemen) – a raconteur, salt-crusted storyteller and bittersweet bard. In his deep baritone, Mikelangelo explores the heart's stormy reaches and indulges in absurd overboard shanties. Together with members of Van Diemen's Band, Mikelangelo dives into his songbook of maritime folk music to evoke in song the salty smack of open water.

Ian Potter Recital Hall

Sat 23 Mar 3pm & 7pm

🕒 60 mins (no interval)

💰 Tickets \$30 - \$55

★★★★ *Exquisite*  
Sydney Morning Herald



# Xyris Quartet



Xyris Quartet's performances rely solely on the saxophone to interpret classical standards and experimental contemporary composition.

Its members – Benjamin Price (soprano saxophone), Jabra Latham (alto saxophone), Thomas McKay (tenor saxophone), and Eva Nilssen (baritone saxophone) – play exclusively on vintage saxophones that preserve the acoustic properties intended by the instrument's inventor, Adolphe Sax.

Xyris Quartet has recorded and performed for the Tasmanian Symphony Orchestra and appeared as soloists with the Hobart Chamber Orchestra.

For Xyris Quartet's Theatre Royal season, its players will tackle the timeless works of classical masters, contemporary compositions and debut brand new music that bridges centuries of musical tradition.

Ian Potter Recital Hall

Sat 6 Apr 7pm

🕒 60 mins (no interval)

💰 Tickets \$30 - \$55

Image: Alastair Bett

Bing/Santospirito

# The Equinox Sound Baths



Sound is restorative, a soothing balm to ease broken hearts, minds and souls. *The Equinox Sound Baths* is the product of Natalya Bing and Joshua Santospirito's improvisational musical experiments that found the pair returning to concepts of healing, grief and gentleness.

Over three sessions Bing/Santospirito will weave their healing aural cocoon from synthesisers, piano and violin – a space for audiences to reflect, restore and relax. Listeners are welcome to sit, stand, move around the space, bring a cushion or a mat on which to sprawl.

Ian Potter Recital Hall

Sat 21 Sep 10am (Morning),  
2pm (Afternoon) & 6pm  
(Sundown)

🕒 60 mins (no interval)

💰 Tickets \$30 - \$40

Image: Jacob Collings



Van Diemen's Band

## Cloak & Dagger

Music can be as simple as a love song. But keep digging and you'll find buried secrets, double meanings and encrypted emotions. In the 17th Century, songs concealed clandestine messages, spread political propaganda and revealed signs of witchcraft.

*Cloak & Dagger* sees Van Diemen's Band time travel to 17th Century England and Scotland – an age of political turmoil, religious upheaval and social revolt. In bawdy taverns they find hop-soaked protest songs; and in domestic manors, tightly-buttoned pop tunes designed to reinforce societal and gender norms. With *Cloak & Dagger*, Van Diemen's Band recontextualise centuries-old music, finding relevance to today's social and political climate.

★★★★ 1/2

*Superbly imaginative and deeply engaging*

The Age

Ian Potter Recital Hall

Sat 26 Oct 3pm & 7pm

🕒 60 mins (no interval)

💰 Tickets \$30 - \$55

Image: Albert Comper

Australian String Quartet

## Aurora



★★★★ 1/2

*Razor-sharp ensemble and expressive playing*

The Age

Ian Potter Recital Hall

Fri 22 Nov 7pm

🕒 120 mins (with interval)

💰 Tickets \$30 - \$65

*Aurora* sees the acclaimed Australian String Quartet build a shimmering sound-world from three distinct compositions. Listeners will be transported to the late 18th Century, finding resonances in fantastical contemporary arrangements and 19th Century romanticism.

The evening opens with Joseph Haydn's String Quartet in D Major, Op.76 No.5, an upbeat first movement, contemplative and otherworldly passages in the second and a thrillingly bright finale. Next comes a journey from darkness to light with Finnish composer Olli Mustonen's String Quartet No.1. And closing the concert is Edvard Grieg's String Quartet No. 1 in G Minor, an 1877 Norwegian gem fusing Romantic melodies and folk influences.

Image: Laura Manariti

## More shows, more savings

Alongside the Theatre Royal's 2024 Season, our spaces are hired by local, national and international artists all year round.

The following productions are offering Theatre Royal Subscribers and Members a 10% discount on tickets. This year, these shows are also included as part of your multi-show package.

More will become available on our website throughout the year, so stay tuned.

### This is Our Youth



Wed 17 – Sat 20 Jan  
Golding Creative

Following the lives of three privileged but disenchanted young adults in 1980's New York City, *This is Our Youth* explores themes of youth, rebellion, and the challenges of transitioning into adulthood as they grapple with stolen money and complex relationships.  
Tickets \$49 - \$59

### Brian Cadd



Sat 10 Feb  
Sinclair Artists

Brian Cadd is a bona-fide music legend. Platinum album seller. ARIA Hall of Famer. Multi-award winning songwriter. Recipient of an Order of Australia (AM). This powerhouse singer and piano player still rocks in today's retro-pumped music business and is as energised and creative as ever.  
Tickets \$79 - \$89

### Duende Flamenco Show



Sat 2 Mar  
Paco Lara

Recognised as the most prominent flamenco guitarist living in Australia, Paco Lara and his troupe are a world class musical and cultural experience not to be missed!  
Tickets \$45 - \$58

### Take the Spotlight and Run



Sat 20 Apr  
Jude Elliot, Meg Bignell, Nicole Farrow and Di Richards

It's the battle of the music genres in this fast-paced tribute to women in music. From classical to contemporary, musical theatre to jazz, these four divas defend their favourite genres, turn them on their heads and bring them to life.  
Tickets \$49 - \$59

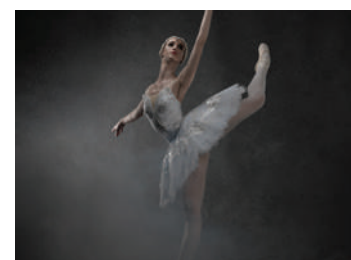
### Uni Revue 2024: The Rockliff Horror Show



Fri 10 – Sat 25 May  
The Old Nick Company

The *Uni Revue* – Tasmania's most politically incorrect party – is back in its 76th iteration with The Rockliff Horror Show! A rollercoaster comedy show lampooning politics, pop culture, music and social issues, written from scratch each year with a uniquely Tasmanian perspective.  
Tickets \$40-\$60

### Swan Lake



Sat 29 – Sun 30 Jun  
Victorian State Ballet

With a cast of internationally recognised artists, *Swan Lake* will bring the superb ballet technique of Petipa's original choreography to the stage, re-staged by Victorian State Ballet's director Michelle Sierra.  
Tickets \$55-\$95

We have a range of packages that make it easy for you to join us as often as you'd like, for less.

If you're a pre-planner, our **3-Show and 5-Show Packages** feature some excellent benefits and the best value. For regular theatregoers who prefer to book on the run, a Theatre Royal **Membership** gives you flexibility while still rewarding your loyalty.

### **2024 Season**

The productions and events in this brochure make up our 2024 Season, which is curated and presented by the Theatre Royal or co-presented with other companies and festivals. Subscribers and Members enjoy discounts and benefits when purchasing tickets to the Theatre Royal's 2024 Season.

## Subscription Packages & Membership



Image: Rosie Hastie

## Why subscribe to a Season Package?

### **Save money**

Subscribers save between 10% and 20% on tickets – see the 2024 Season Packages on page 48.

### **Bring a friend**

Each additional ticket purchased also attracts your Subscriber discount, so your friends will love you as much as we do.

### **Flexibility**

Exchange your tickets to a different date or time at no cost.

### **Cheers to you**

Receive 20% off all food and drinks at our bars throughout the year.

### **Special events**

Join us and your fellow theatre lovers for special events that we organise with visiting companies.

### **Put us in your wallet**

Subscribers and Members can choose to receive a physical or digital loyalty card to use when redeeming discounts at the bar.

### **Payment plans**

You can pay for your Subscription over several instalments. See more details on our website for plans available through PayPal and the Theatre Royal.

### **But wait, there's more**

In addition to Theatre Royal Season shows, some producers who present their work at the Theatre Royal and The Hedberg offer discounts to our Subscribers and Members (see page 44). There will be more throughout the year and we'll keep you up to date on our website and in e-newsletters.

# 2024 Season Packages

## 5+ Show Package

Buy 5 or more shows  
Save 20%

- Save 20% when buying tickets to five or more shows in one transaction
- Additional TR Season shows purchased during the year will also attract your subscriber discount
- All seat categories are available, for all shows
- Enjoy unlimited free exchanges
- Access additional tickets for family and friends at the discounted price
- Two complimentary drinks for each Subscription Package purchased
- Receive 20% off all food and beverages at our bars

## 3+ Show Package

Buy 3 or 4 shows  
Save 10%

- Save 10% when buying tickets to three or four shows in one transaction
- Additional TR Season shows purchased during the year will also attract your subscriber discount
- All seat categories are available, for all shows
- Enjoy unlimited free exchanges
- Access additional tickets for family and friends at the discounted price
- Receive 20% off all food and beverages at our bars

# Memberships

## Membership

A Theatre Royal Membership is designed to suit theatre lovers who will attend several shows throughout the year but aren't ready to plan and purchase in advance.

### The deal

- Annual Membership fee of \$30
- 20% discount on all Theatre Royal 2024 Season shows
- All seat categories are available, for all shows
- Discount applies to all tickets in your booking
- Receive 10% off all food and beverages at our bars
- We'll also let you know about other exclusive shows, events and offers throughout the year

## Student Membership

A new Student Membership for full-time secondary, pre-tertiary and university students.

- \$30 tickets to all Theatre Royal Season shows
- No joining fee
- All seat categories are available, for all shows
- Purchase additional tickets for friends at standard prices

For full terms and conditions and to apply for your membership, see our website.

# How to book

## 1. Online

[www.theatreroyal.com.au](http://www.theatreroyal.com.au)

## 2. In person

The Hedberg  
Corner of Campbell &  
Collins streets, Nipaluna/  
Hobart

## 3. By phone

(03) 6146 3300

# Affordable tickets

## 30 Under 30

For every Theatre Royal 2024 Season show, we'll make a limited number of seats available to patrons under 30 years old for just \$30. Sign up for this great offer via our website.

## Concession tickets

Concession prices are available to anyone with a full-time student card, Centrelink Pensioner concession card, Veterans' Affairs cards, a Commonwealth Seniors Health Care Card or Low Income Health Care Card.

## Industry Allies

We think it's important that creative professionals get to experience as much art as they can. By signing up to our Industry Allies, hardworking arts workers can access a limited number of seats reserved for every show for \$30.

Apply to join the Industry Allies program via our website.

## Accessibility

### Deaf and hard of hearing people

Audio loop technology is available for hard of hearing patrons, and hearing dogs can be taken into any of our performance spaces.

### Wheelchair users

There is a lift inside the main entrance to The Hedberg, which provides access to all levels of the Theatre Royal and The Hedberg buildings.

The Theatre Royal, Studio Theatre and the Ian Potter Recital Hall have dedicated seating options for patrons in wheelchairs and their guests. Please contact the Box Office to book.

### Blind and partially sighted people

Guide dogs for the visually impaired are welcome in all our venues.

### Accessible parking

Accessible parking is available on Collins Street directly in front of The Hedberg building for drop-off and pick-up. Please note, these car spaces have drop kerbs and are time limited.

### Quiet spaces

We have several quiet spaces in our foyers where you can relax. Complimentary earplugs are available for guests who may benefit from them.

### Companion Card

The Theatre Royal is a signatory to the Companion Card Scheme and Companion Card bookings can be made through our box office.

### Contact us

If you have any questions about accessibility or need help to make your visit to the theatre more comfortable, please contact our Box Office on (03) 6146 3300 or [boxoffice@theatreroyal.com.au](mailto:boxoffice@theatreroyal.com.au)



## The Hedberg Talks

The Hedberg Talks bring together artists from the stages of the Theatre Royal, academics from the University of Tasmania and a range of commentators and thinkers to have conversations that celebrate ideas, creativity and innovation.

The Talks form part of a major partnership between the University of Tasmania and the Theatre Royal.

In 2024, talks are planned alongside the following productions:

*The Mousetrap*  
Sat 15 June

*Body Body Commodity*  
Sat 14 September

*The Visitors*  
Sat 3 August

*The Hedberg Sounds*  
Sat 26 October



## How we support artists

The Theatre Royal is committed to increasing the ways we work with Tasmanian artists, ensuring there is a pathway that supports the development of artistic practice and new creative ideas, and then connects those artists and ideas with an audience.

We do this by supporting the creation of new work and partnering with local artists and companies in the presentation of their work.

### RAWspace

RAWspace is a residency program that provides Tasmanian artists and companies with financial, venue, and technical support to progress new ideas and new work into the next stage of development and presentation.

In 2024, we're amplifying the impact of this development program with RAWspace x Mona Foma – an opportunity for music and sound artists to be in-residence during the 2024 festival and to test their ideas with an audience.

To find out more about the various RAWspace opportunities and how to apply, visit our website [theatreroyal.com.au/rawspace](http://theatreroyal.com.au/rawspace)

The Theatre Royal acknowledges the valuable assistance of our inaugural Giving Circle Patron Belinda Kendall-White and thank City of Hobart, Mona Foma and Performing Lines TAS for supporting RAWspace 2024.

Image: Rosie Hastie

## Support us

The Theatre Royal believes everyone has the right to experience and participate in creative and cultural activities.

With your support, we can:

**Create greater access** to live performance for school students and community members who face barriers to attending.

**Create more participation opportunities** for children and young people through creative activities and workshops, such as our Staycation school holiday program and Young Ambassadors program.

**Create programs that nurture talent**, such as RAWspace, supporting Tasmanian artists to develop new works and tell stories that are relevant to our community now.

All donations of \$2 or more are tax deductible.

For more information on how best to direct your support, please contact our Business Development Manager.

[development@theatreroyal.com.au](mailto:development@theatreroyal.com.au)  
(03) 6416 3316  
[www.theatreroyal.com.au/donate](http://www.theatreroyal.com.au/donate)



### Corporate partnerships and entertaining packages

Whether you're seeking premium brand exposure for your organisation, engagement for your clients and staff or to increase your company's community involvement, a corporate partnership with the Theatre Royal can be tailored to suit your business.

Our new spaces within The Hedberg offer a range of unique corporate entertaining, business event or networking options that can be enjoyed in conjunction with amazing performances from some of Australia's leading performing arts companies.

If you would like to discuss a corporate partnership or hospitality package, please email [development@theatreroyal.com.au](mailto:development@theatreroyal.com.au)

Image: Brad Harris

The Friends of the Theatre Royal undertake a range of activities throughout the year, bringing to life the stories and history of our theatre and those who have made it such a special place. The Friends make a valuable contribution to keeping our history alive, while supporting the next generation of theatre makers and audiences.

## Friends of the Theatre Royal

### **Tours**

The Friends conduct regular guided tours of the Theatre Royal, providing a unique opportunity to see its amazing spaces, while sharing some fascinating secrets and entertaining stories.

### **Events**

Throughout the year, the Friends hold special events such as guest artist talks, screenings, book launches and excursions to places of theatrical and historical interest.

### **Support**

The Friends contribute to the theatre by fundraising to assist school students attend a live performance through subsidised tickets and bus transport. The Friends also provide archival and research support and help to improve the theatre's facilities.

### **Join the Friends of the Theatre Royal**

If you're interested in becoming more involved with the theatre and attending social and fundraising events, you can become a member of the Friends of the Theatre Royal. Contact our Box Office on (03) 6146 3300 or visit our website.



## Visiting us

### **Arriving at the theatre**

For details and directions to drop-off zones, car parks and nearby restaurants, please visit our website.

### **Bars and foyers**

Our bars and foyers are open 90 minutes prior to a performance and offer quiet corners and inviting lounges to meet, relax and have a drink with friends and family before your show.

### **Pre-order and skip the queue**

Pre-order your interval drink at the bar on your seating level before the show. Our bar staff will have your order prepared for you to collect at the beginning of the interval.

### **Cloaking services**

Cloaking services are available at the Box Office on Level 2 and the Studio Bar on Level 4.

# The Theatre Royal thanks our partners for their support in 2024

## Government Partner



## Program Partner



## Engagement Partner



## Production Partners



## Business Partners



## Media Partners



## Supporters

# Season 2024 Funding Support

## Supported by



Dancenorth: *Wayfinder*  
Mature Artists Dance Experience: *To Carry / To Hold*  
Australian Theatre for Young People & Archipelago Productions: *Past the Shallows*  
Terrapin Puppet Theatre: *The Riddle of Washpool Gully*  
Van Diemen's Band  
Tasdance: *Body Body Commodity*

## Supported by



Contemporary Asian Australian Performance: *Lost in Shanghai*  
Briefs Factory International: *Dirty Laundry*  
Patch Theatre and Gravity & Other Myths: *I Wish*  
Erth Visual & Physical Inc: *ARC*  
Moogahlin Performing Arts & Sydney Theatre Company: *The Visitors*  
Australian Theatre for Young People & Archipelago Productions: *Past the Shallows*  
Opera Australia: *La Bohème*  
Windmill Theatre Company: *Grug*  
Terrapin Puppet Theatre: *The Riddle of Washpool Gully*  
Gravity & Other Myths: *A Simple Space*

## Major Festivals Initiative



Mona Foma, Insite Arts and Justin Shoulder: *ANITO*



Mona Foma, Insite Arts and Justin Shoulder: *ANITO*  
Dancenorth: *Wayfinder*

# THE GREAT ROYAL 2024